

MSX 100AB

1 kW Pulse SSPA

9.0 GHz – 10.0 GHz

- 20% Maximum Duty
- 1000 W_{pk} Minimum Power
- 9.0 to 10.0 GHz
- Output Power Flatness 0.5 dB
- 500 W Typ. Prime Power @10%
- -40 dBm/MHz Typ. Noise Power Density
- 60 dB Typical Rated Gain
- 13" L x 8.5" W x 2.5" H (32 x 21 x 6 cm)
- Weight 10 lbs. Max.
- -40° to 85° C
- Rack Mount Available



RF Performance

Freq (GHz)	Typ. Sat. Power Output (W)	Min. Spec. Power Output (W)	Typ. Gain @ Spec. Power (dB)
9.0	1000	1000	60
9.1	1050	1000	60
9.2	1050	1000	60
9.3	1100	1000	60
9.4	1150	1000	60
9.5	1150	1000	60
9.6	1150	1000	60
9.7	1100	1000	60
9.8	1050	1000	60
9.9	1050	1000	60
10.0	1000	1000	60

Typical power output is shown to illustrate capability.

Power Supply Requirements

Voltage Min.	Voltage Max.	Current Max.
18 Vdc	36 Vdc	16 A

Connectors

DC	Monitor	RFin	RF out
Screw Terminal	9 pin Dsub	SMA	WR90/TNC

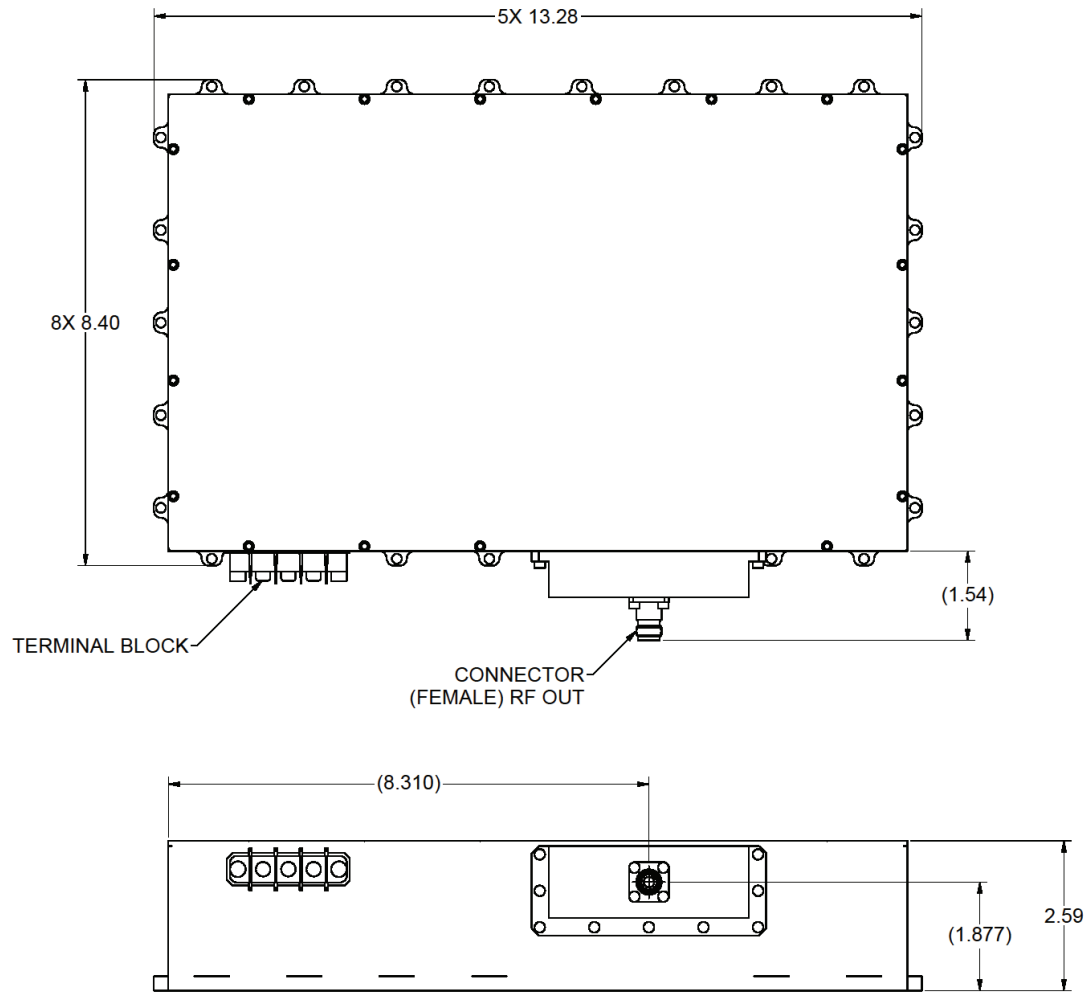
Monitoring Options

P_{out}, I_{avg}, Duty Cycle, Gain, Temperature

Performance

	Typical	Spec
Input VSWR:.....	1.4:1	2.0:1
Max. Duty	20%	20%
Max. Pulsewidth	300 μs	100 μs
Noise Power Density (dBm/MHz)	-40	-30
Prime Power	500 W	550 W

This model number is subject to the jurisdiction of the U.S. Department of Commerce.



SUBJECT TO CHANGE W/O NOTICE

ISO 9001:2008 Registered

TELEDYNE MICROWAVE SOLUTIONS
TWT PRODUCTS
11361 Sunrise Park Dr., Rancho Cordova, CA (916) 638-3344

TITLE

MSX 100AB

This model number is subject to the jurisdiction of the U.S. Department of Commerce.