

Targeted solutions for complex connections.

RECTANGULAR CONNECTOR ASSEMBLIES

Teledyne Storm Microwave now offers more connectivity than ever with our new line of VITA 67.3 NanoRF and SMPM assemblies.

VITA 67.3 NanoRF

VITA 67.3 SMPM

NANO RF CABLE ASSEMBLIES

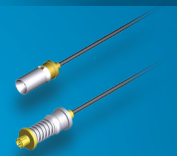
SMPM CABLE ASSEMBLIES



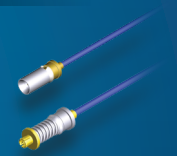
StormFlex® 034
Daughter Card & Backplane



StormFlex® 047
Daughter Card & Backplane



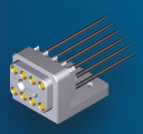
StormFlex® 034
Daughter Card & Backplane



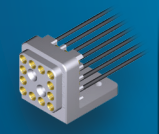
StormFlex® 047
Daughter Card & Backplane

NANO RF DAUGHTER CARDS

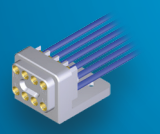
SMPM DAUGHTER CARDS



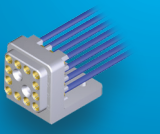
8-Position



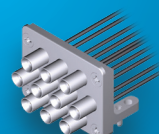
12-Position



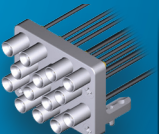
8-Position



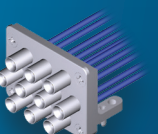
12-Position



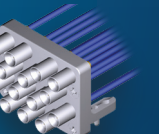
10-Position



14-Position



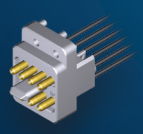
10-Position



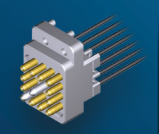
14-Position

NANO RF BACKPLANES

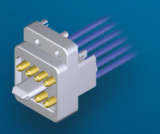
SMPM BACKPLANES



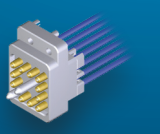
8-Position



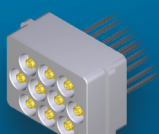
12-Position



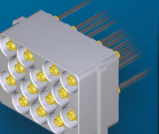
8-Position



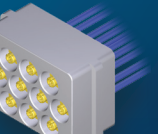
12-Position



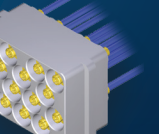
10-Position





14-Position



10-Position



14-Position

CONTACT US:  Toll Free: 888.347.8676
 storm_microwave@teledyne.com

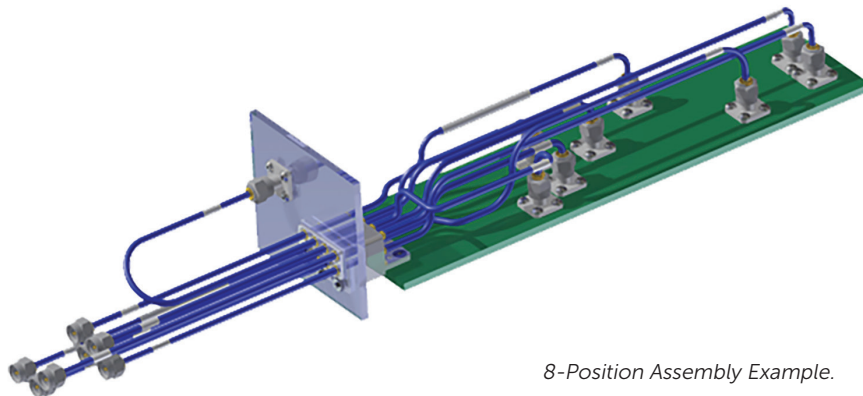
WWW.TELEDYNESTORM.COM

DATA & SPECIFICATIONS

TELEDYNE STORM MICROWAVE RECTANGULAR CONNECTOR ASSEMBLIES

Teledyne Storm Microwave offers high performance cable assemblies that meet our customer's challenging needs. In the examples shown below we have tailored our cables to match unique form factors and still deliver great performance. We look forward to answering any questions about how our products can solve your needs.

VITA 67.3 NanoRF & SMPM



8-Position Assembly Example.

ELECTRICAL

Characteristic Impedance	50 ohms
Operating Frequency	DC to 40 GHz
VSWR	1.25:1 TYP. DC to 26.5 GHz (Connectors Only)
	1.4:1 TYP. 26.5 GHz to 40 GHz (Connectors Only)
Insertion Loss (.047 cable only)	0.12* \sqrt{f} (GHz), DC to 40 GHz
Channel to Channel Isolation (Cross Talk)	90 dB min. thru 40 GHz
DWV (@ sea level)	325 Vrms when tested per MIL-STD-202, Method 301

MECHANICAL

Axial Travel	.079" Min
Radial Float	\pm .010" Min
Engage Force	3.5 lbs (typical per contact)

ENVIRONMENTAL

Temperature Range	-55 to 125°C
-------------------	--------------

Specifications subject to change without notice.



AS9100/ISO 9001 Registered

- 📍 10221 Werch Drive, Woodridge, IL 60517 USA
- ☎ Toll Free: 888.347.8676 | Main: 630.754.3300
- ✉ storm_microwave@teledyne.com
- 🌐 www.TeledyneStorm.com